














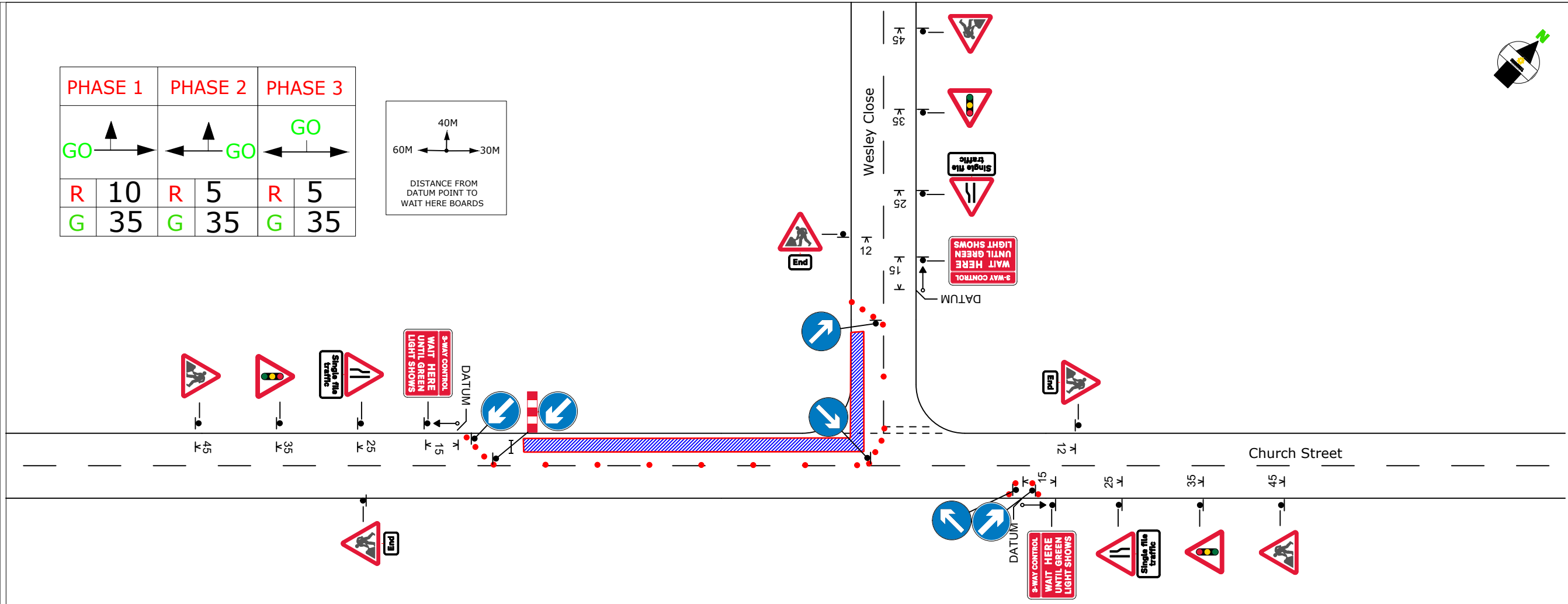
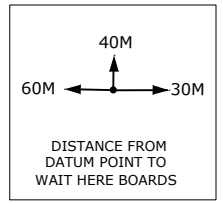
Site Location / Drawing Title
 Church Street @ jnc Wesley Close
 South Cave
 Brough. HU15 2EH
 Client: Northern Gas Networks
 Contract No DR4035
 Date 04/04/2022
 Drawn by DR




Purpose of works Gas works
 Version Number 001
 Amended By xxxxxxxxxxxx
 Amendment Date xx/xx/xxxx
 Scale NOT TO SCALE
 Sheet No 3 of 3

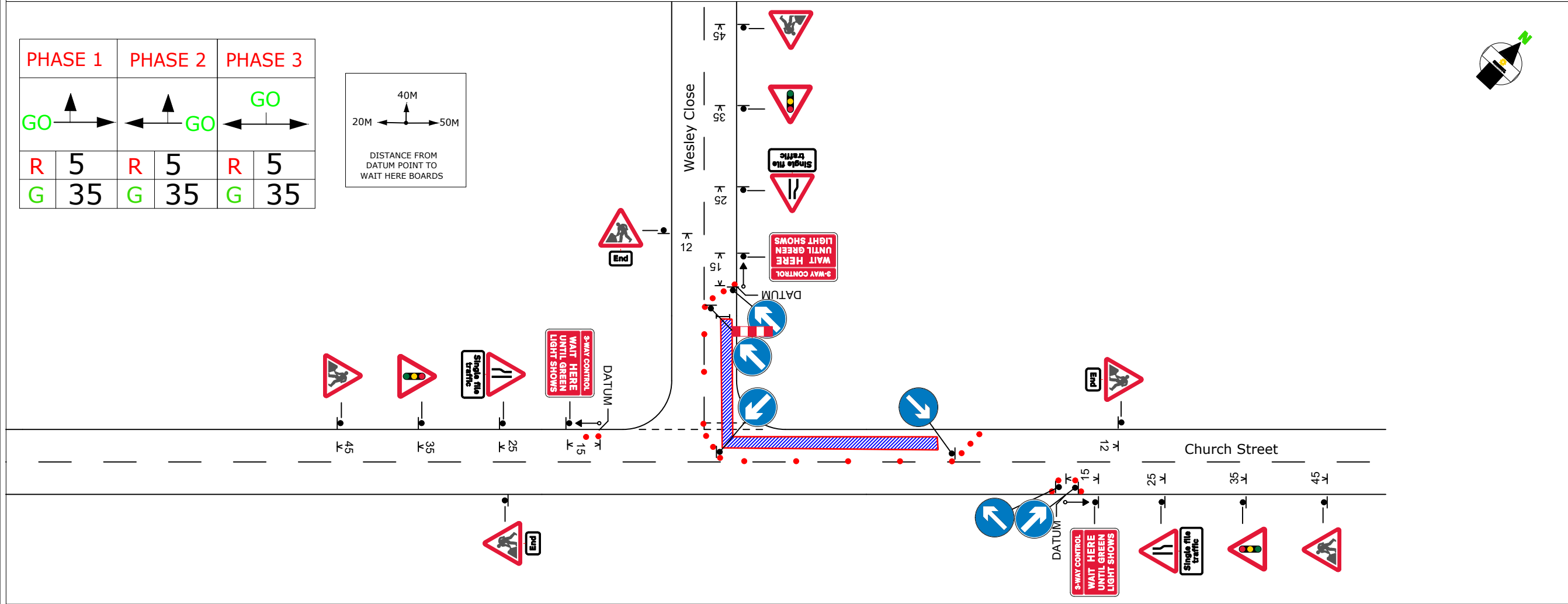
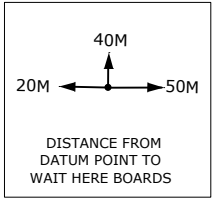
SPEED OF ROAD	MPH	30
DISTANCE FROM FIRST SIGN TO START OF SITE(D)	MIN	20m
	MAX	45m
SIDEWAYS SAFETY ZONE (S)		0.5m
LONGWAYS CLEARANCE (L)		0.5m

- KEY**
-  Traffic sign
 -  Traffic cone
 -  No Parking cone
 -  Traffic signals
 -  Perm signal head
 -  Working Space
 -  Controlled area
 -  Pedestrian Barrier
 -  Pedestrian crossing
 -  Bus Stop

PHASE 1	PHASE 2	PHASE 3
GO 	 GO	GO 
R 10	R 5	R 5
G 35	G 35	G 35



PHASE 1	PHASE 2	PHASE 3
GO 	 GO	GO 
R 5	R 5	R 5
G 35	G 35	G 35



THIS DOCUMENT IS UNCONTROLLED WHEN PRINTED
 The electronic version of this document is the approved and most current.
 Any printed version is uncontrolled and may not be current.

The information in this drawing may not be copied or used by third parties without written consent from Sunbelt Rentals Ltd (Traffic Management).
 This layout is for installation by NRSWA qualified persons.
 All works shall be in accordance with Safety at Street Works and Road Works, A Code of Practice (2013) & Chapter 8