

The Great Grid Upgrade

North Humber to High Marnham

Attachment A

North Humber to High Marnham

**Project update with
South Cave Parish Council**
February 2024

nationalgrid



Introductions



Graham

Senior Consents Officer



Amy

Senior Project Manager



Alicia

Senior Consents Officer



Anna

Community
Relations Team

Agenda

01	Stage one consultation
02	Sections 2 & 3 proposals
03	Next steps
04	Social value strategy / community benefits / biodiversity net gain
05	Project communications / keeping people informed
06	Questions and any other business

The Great Grid Upgrade

North Humber to High Marnham

01

Stage one consultation

national**grid**



Consultation overview

Consultation – 8 weeks (1 June to 27 July 2023)

Introductory newsletter – sent to just under 12,000 properties in Primary Consultation Zone (within 1km of emerging preferred corridor)

Advertising – 8 online and print advertisements; 1,922,587 impressions across social media.

Public consultation events – 9 events (5 June to 8 July) with 630 total attendees.

Online webinars – 8 events (5 June to 19 July) – 43 attendees

Telephone call backs – 42 calls in the consultation period; one telephone call-back requested

Feedback response numbers – 584 responses, including 398 online forms; 94 written forms; 84 emails and 7 letters

Website – 21,593 visits. Document library, interactive map and content remain online



Consultation overview – consultation summary

The Stage One Consultation summary was shared with political stakeholders, including all Parish Councils, and those who signed up for the project's mailing list.

The feedback received has been included in the consultation summary and summarised below:

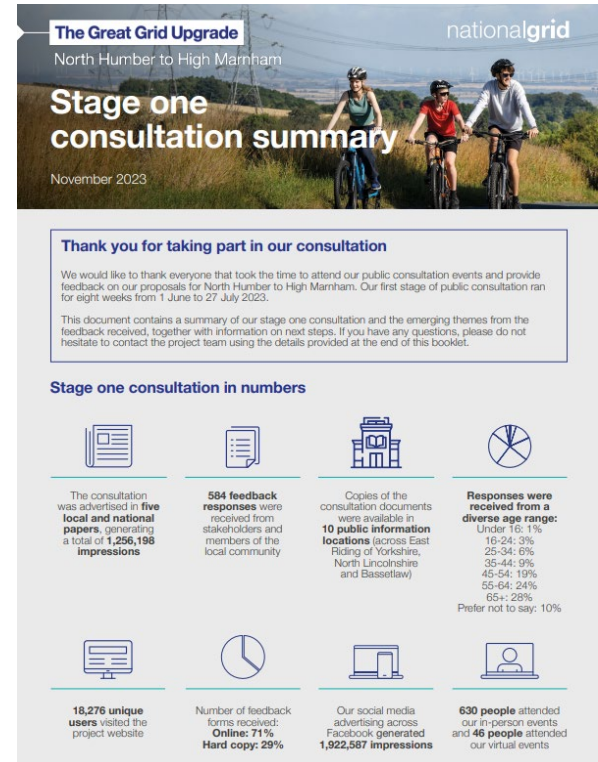
Net zero – 36% of people responding said it was important for them for the UK to meet its target of net zero carbon emissions by 2050. 52% expressed neutral views and 13% disagreed.

Climate change – 46% of people said they were concerned or very concerned about the effect of climate change on their lives and 52% were concerned about the impacts on the lives of future generations.

Overhead lines – Feedback included requests to use or upgrade existing overhead lines as much as possible and to bury the new line underground in places.

Construction – Comments were received regarding disruption during the construction period, including impact on the local road network. Several requests were received for considerate contractors, well-planned HGV routes, and construction activities scheduled during sociable hours.

National Grid | North Humber to High Marnham | February 2024




Consultation overview – consultation summary

Ecology – Some people asked us to avoid designated sites including Sites of Special Scientific Interest and to reduce impacts on local wildlife. Others asked us to avoid felling trees and expressed concerns about disturbing migrating birds.

Community investment – We received comments about the need for investment in community facilities, like parks and active travel facilities. Others commented on the need for green energy infrastructure, such as EV charging.

Visual impact – The visual impact of the proposed overhead line was a common concern. Some respondents noted they would like new overhead lines to be built close to existing overhead lines and away from villages and houses. Others were concerned about the cumulative impact of an additional overhead line.

Landscape and heritage – People asked us to ensure a new overhead line would not spoil rural landscapes and potential candidate Areas of Outstanding Natural Beauty. Several comments were received about potential negative impacts regarding a number of different local landmarks and cultural heritage interests.




Next steps and anticipated project timeline

The feedback received throughout the first stage of consultation will inform how our plans for North Humber to High Marnham are developed further and will influence the next stage in the design of the project, including our stage two consultation in 2024. This consultation will provide an opportunity to comment on our more detailed proposals.

The timeline below indicates the milestones and indicative dates for the project. For more details on the Development Consent Order (DCO) planning process, please visit infrastructure.planninginspectorate.gov.uk/application-process/the-process/.

When we are nearer to construction, our community grant programme will be open for applications from local charities and not for profit organisations to support local community initiatives. You can find out more at nationalgrid.com/responsibility/community/community-grant-programme.




Timeline milestones:

- 2023: Stage 1 public consultation
- 2024: Stage 2 public consultation
- 2026: DCO application submission
- 2027: Construction starts
- From 2031: Fully operational

Contact us

By email: contact@nh-hm.nationalgrid.com
By phone: 0800 051 4430
By post: Freepost NH TO HM (No stamp or further address details are required).



If you feel your land may be affected by these proposals, our dedicated Land Team will be pleased to speak with you. You can contact the North Humber to High Marnham Land Team at Dalcour Maclaren by calling 01270 904929, writing to Unit 1, Staplehurst Farm, Weston on the Green, OX25 3QU, or by emailing NH-HM@dalcourmaclaren.com.

A full-page background image showing three people (two men and one woman) cycling on a paved path. They are wearing helmets and casual cycling gear. The path is bordered by tall grass. In the background, several large electricity pylons with power lines stretch across the landscape under a blue sky with light clouds. Wind turbines are visible in the distance.

The Great Grid Upgrade

North Humber to High Marnham

02

Sections 2 and 3 proposals

national**grid**

Section 2 – Skidby to A63 dual carriageway

This section runs from the north of Skidby to the A63 dual carriageway, which is located on the western edge of the Yorkshire Wolds. In this section, we are looking at two different alignments; to the north and south of Skidby.

To the north of Skidby, we would route the new overhead line close together with the existing overhead line to help reduce the landscape and visual impacts. This may increase in areas to help avoid impacts on individual properties and Brantingham Dale SSSI.

Southwest of Skidby (and south of Little Weighton) we would route the new overhead line to the south of the existing line. This would require two line swap overs for a maximum distance of 5km.

Before crossing the A63, the swathe follows two discrete paths; one to the north of Ellerker and the other to the south. The southern option would require a swap over of the new and existing overhead line.

While line swap overs provide the opportunity to route further away from villages such as Ellerker and environmentally sensitive areas like the Blacktoft Sands RSPB reserve in Section 3, repeatedly swapping back and forth to different sides of the existing overhead line would be technically more complex and costly.



Section 3 – A63 dual carriageway to River Ouse crossing

This section runs from the A63 dual carriageway, on the western edge of the Yorkshire Wolds to Blacktoft Lane, a road in close proximity to the northern bank of the River Ouse. When routing the graduated swathe in this area, we have considered a number of features and impacts, including:

- the presence of the existing 400kV overhead line;
- the location of the two villages of Ellerker and Broomfleet; and
- the impact on bird species using the nearby Humber Estuary internationally designated sites.

We are considering three paths within this swathe where the new overhead line could be routed; a northern, central and south path. There are opportunities to combine different paths within this section, which we will look at during detailed design stage. All routes would cross both the Selby-Hull railways line and the Market Weighton Canal.

The northern and central paths would lead into a crossing of the River Ouse to the west of the existing 400kV overhead line and the southern path would lead to a crossing to the east.

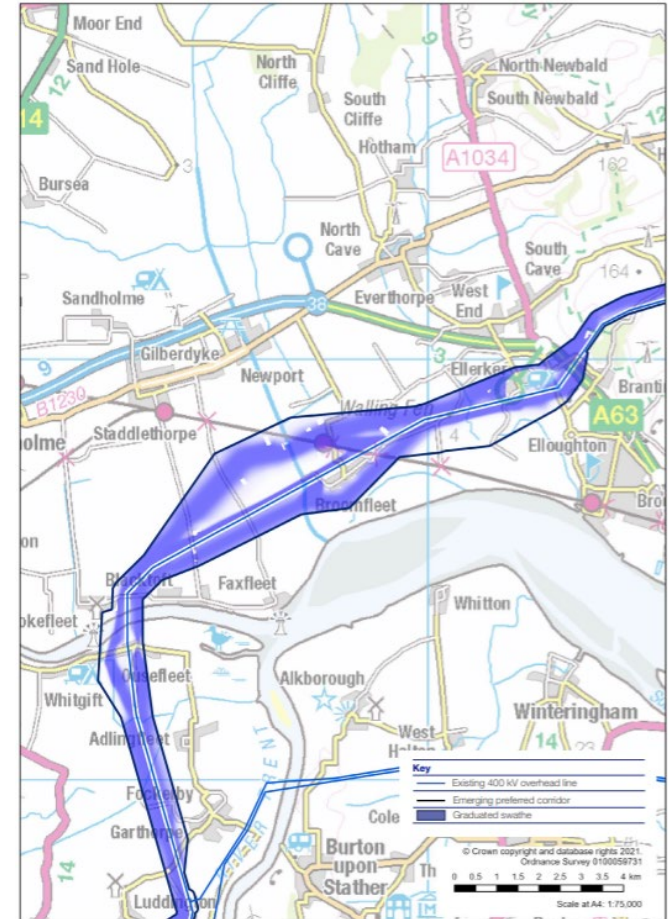


Figure 7 Map showing section 3 of the emerging preferred corridor

Feedback – early insights – South Cave Parish Council

Corridor routeing – requesting undergrounding of the proposed infrastructure and comments on individual preferences for siting the new overhead line within the graduated swathe

Cumulative effect – due to the existing transmission infrastructure, wind farms and existing/planned solar farms

Landscape and visual – concerns regarding landscape and visual impacts and related requests to underground the proposed infrastructure

Safety concerns – concerns regarding noise, potential health risks and visual impacts

The Great Grid Upgrade

North Humber to High Marnham

03

Next steps

national**grid**



Project activities

Survey access – ongoing discussions with landowners about survey licence requests

Environmental theme meetings – ecology; historic environment; traffic; noise / air quality; landscape & visual

Elected member and parish council update meetings – ongoing

Consultation on Statement of Community Consultation – Spring / Summer 2024

Stage two consultation – Autumn 2024

The Great Grid Upgrade

North Humber to High Marnham

04

Social value strategy

national**grid**



Social value strategy

Regionally as National Grid Electricity Transmission

Developing & delivering regional initiatives:

(e.g. clean power programmes; environmental partnerships and regional skills programmes)



Grid for Nature



Net Zero Strategy



Skills

North Humber to High Marnham – working closely with local stakeholders to develop and deliver a social value strategy in the vicinity of the proposed upgrade, focussed on four key themes:

Nature positive – delivering a sustainable project that protects and preserves the environment (e.g. biodiversity net gain; opportunities to enhance & improve the local environment, encourage biodiversity, reduce carbon and promote recycling).

Inspiring the next generation – proactively and positively engaging with local schools, colleges and other education providers, to support STEM subjects; raise awareness about the project; and inspire and educate the next generation about career opportunities available to them in the energy sector and transition to Net Zero.

Socio-economic growth – exploring, with our contractors, opportunities to boost the local economy by maximising our spend with local businesses, services and suppliers, and generating new local employment, apprenticeship and training opportunity.

Community support – identifying opportunities to support local registered non-profit community organisations and charities that make a positive impact on residents physical and mental wellbeing (e.g. in the form of time, donation of goods and materials, and financial contributions). In addition to our [Community Grant Programme](#).

The Great Grid Upgrade

North Humber to High Marnham

05

Project communications

national**grid**



Keeping everyone informed

Elected member briefings – happened in late August / September

Community update newsletter – issued Winter 2023 listing consultation key stats/emerging themes; other newsletters will include information on environmental surveys; community benefits; volunteering; signposting preparatory work for next stage of consultation

Parish council meetings – ongoing

Website updates / project e-shots – consultation key stats / emerging themes; project next steps; signposting to next stage of consultation

Stakeholder meetings – Natural England, Historic England, Environment Agency, NGOs (e.g. RSPB, Wildlife Trusts), aviation interests

Developer coordination – solar farms, connecting customers, National Grid substation works

The Great Grid Upgrade

North Humber to High Marnham

06

Questions & AOB

national**grid**



Questions & AOB

national**grid**